



Problem Profile: Crime and Anti-Social Behaviour

Barbican Areas 1 January 2010 to 31 December 2013

Day/ENTE –

Day - 0700-1859

ENTE (Evening and Night Time Economy) - 1900-0659

Weekday –

Runs from 0700 to 0659 (shift day)

Note: All data is only for offences/incidents/arrests where Day, ENTE & weekday can be identified

Offence types-

All violent crime - homicide, serious assault, other assault, common assault and other violence,

sexual offences and robbery.

Public order - sec 4 and 5 Public Order Act, affray, violent disorder and harassment offences

DTL - direction to leave

Drunkenness - drunk in a highway/public place/licensed premises, drunk premises, drunk and disorderly

Heat map tables –

Red = higher values, green = lower values

Calculation –

#DIV/0! – zero values, % cannot be calculated

Barbican (Zone 1)

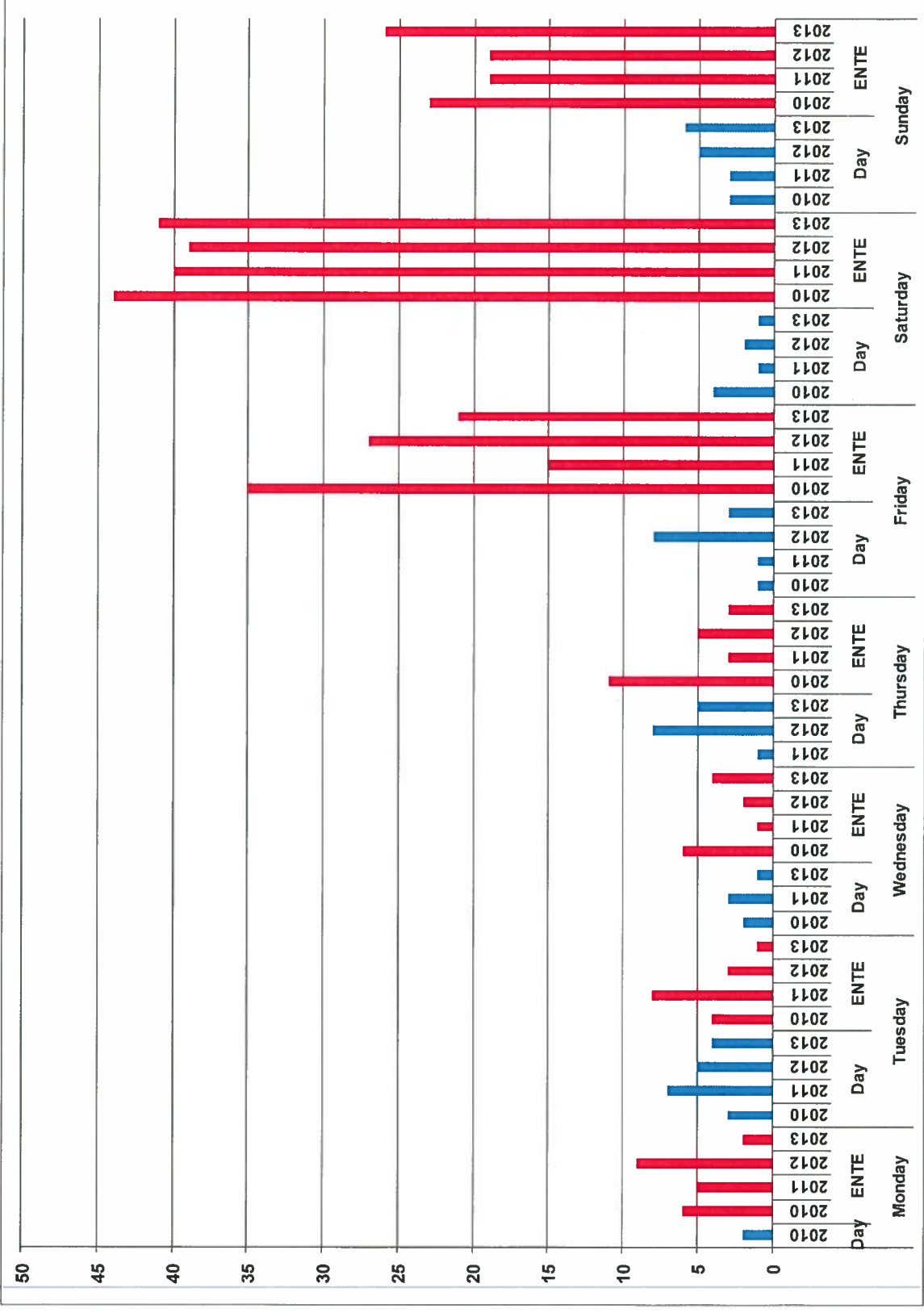
	2010			2011			2012			2013										
	Day	% of Total	ENTE	Day	% of Total	ENTE	Day	% of Total	ENTE	Day	% of Total	ENTE	Day	% of Total	ENTE	Day	% of Total	ENTE		
	Total	% change	Total	Total	% change	Total	Total	% change	Total	Total	% change	Total	Total	% change	Total	Total	% change	Total		
All violent crime	20	16.5%	101	83.5%	121	16	17.2%	77	82.8%	93	25	20.0%	100	80.0%	125	18	17.5%	85	82.5%	103
Sexual offences	0	0.0%	4	100.0%	4	1	12.5%	7	87.5%	8	0	0.0%	5	100.0%	5	2	28.6%	5	71.4%	7
Robbery	0	0.0%	3	100.0%	3	2	33.3%	4	66.7%	6	0	0.0%	1	100.0%	1	1	25.0%	3	75.0%	4
Public order	7	18.4%	31	81.6%	38	8	36.4%	14	63.6%	22	14	33.3%	28	66.7%	42	12	38.7%	19	61.3%	31
Fail to obey DTL	0	0.0%	7	100.0%	7	0	0.0%	9	100.0%	9	1	50.0%	1	50.0%	2	0	0.0%	7	100.0%	7
Drunkenness	0	0.0%	28	100.0%	28	5	21.7%	18	78.3%	23	4	22.2%	14	77.8%	18	3	27.3%	8	72.7%	11
Total	27	13.4%	174	86.6%	201	32	19.9%	129	80.1%	161	44	22.8%	149	77.2%	193	36	22.1%	127	77.9%	163

The table below shows all offences Day/ENTE, and weekday

Barbican (original)

	2010			2011			2012			2013		
	Day	ENTE	Total	Day	ENTE	Total	Day	ENTE	Total	Day	ENTE	Total
	% change	% change	% change	% change	% change	% change	% change	% change	% change	% change	% change	% change
Monday	2	6	8	0	5	5	0	9	9	0	0	0
Tuesday	3	4	7	7	8	15	3	3	8	4	4	4
Wednesday	2	6	8	3	1	4	0	2	2	1	1	1
Thursday	0	11	11	1	3	4	8	5	13	5	3	3
Friday	1	35	36	1	15	16	8	27	35	3	21	21
Saturday	4	44	48	1	40	41	2	39	41	1	41	41
Sunday	3	23	26	3	19	22	5	19	24	6	26	26
Total	15	129	144	16	91	107	28	104	132	20	98	118

The graph below shows all offences Day/ENTE, and weekday: Barbican (original)

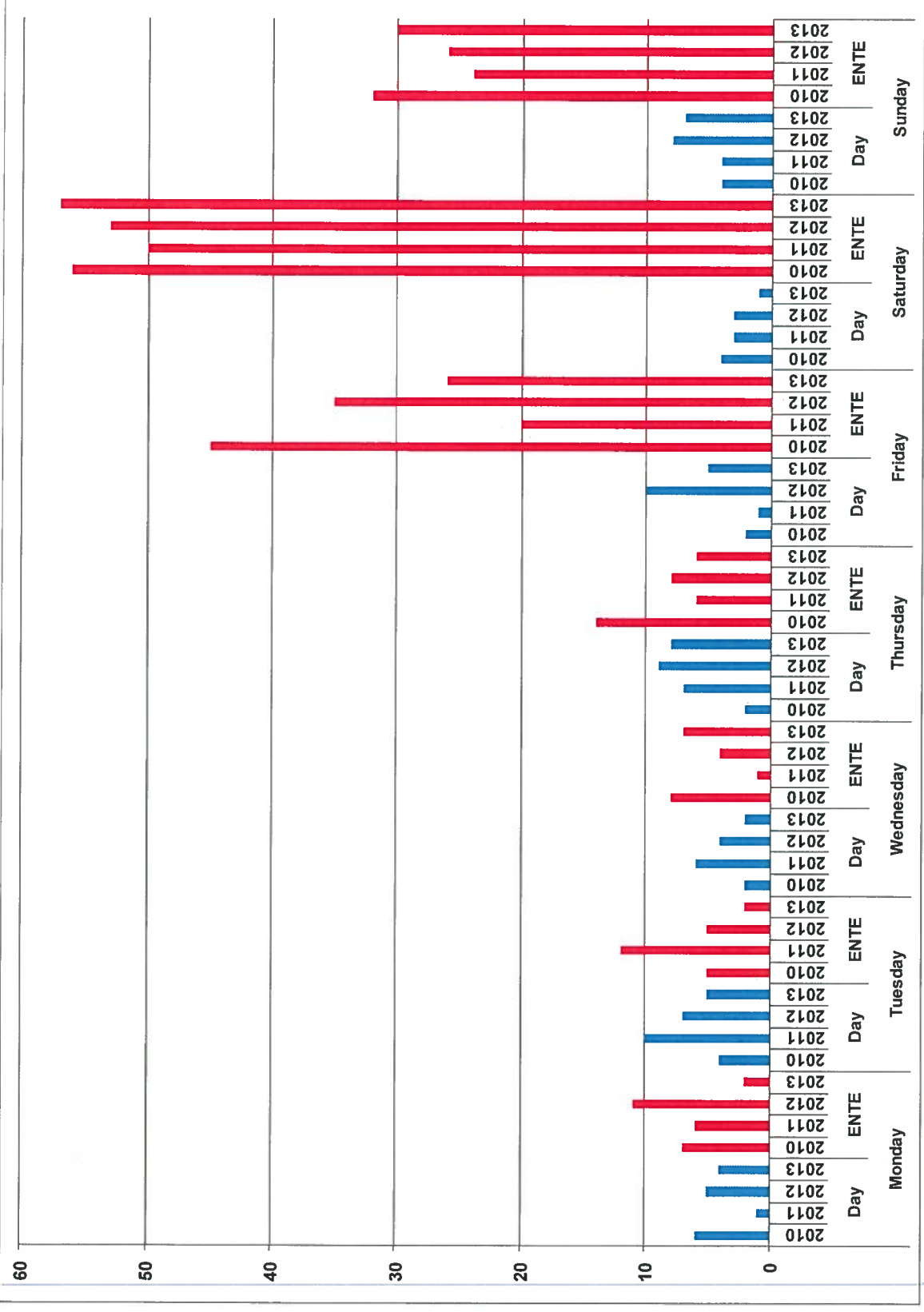


The heat map table below shows all offences by hour and year

Barbican (Original)

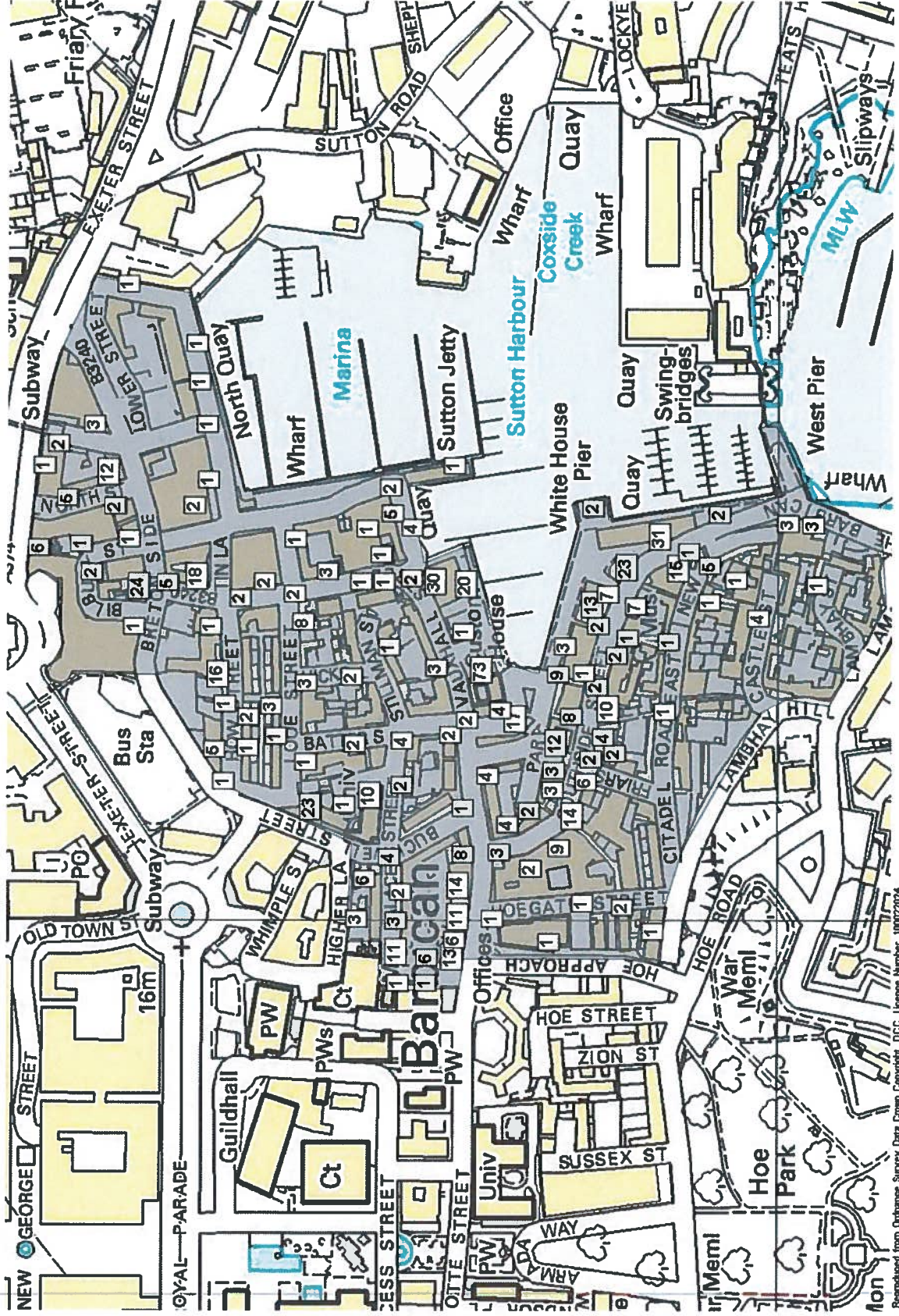
Hour	2010	% of Total	2011	% of Total	2012	% of Total	2013	% of Total
0700-0759	0	0.0%	0	0.0%	0	0.0%	0	0.0%
0800-0859	0	0.0%	0	0.0%	0	0.0%	0	0.0%
0900-0959	0	0.0%	0	0.0%	0	0.0%	0	0.0%
1000-1059	0	0.0%	2	1.9%	1	0.8%	1	0.8%
1100-1159	3	2.1%	1	0.9%	1	0.8%	1	0.8%
1200-1259	0	0.0%	2	1.9%	0	0.0%	1	0.8%
1300-1359	1	0.7%	3	2.8%	1	0.8%	3	2.5%
1400-1459	1	0.7%	0	0.0%	8	6.1%	3	2.5%
1500-1559	1	0.7%	0	0.0%	0	0.0%	2	1.7%
1600-1659	3	2.1%	3	2.8%	6	4.5%	3	2.5%
1700-1759	3	2.1%	2	1.9%	3	2.3%	5	4.2%
1800-1859	3	2.1%	3	2.8%	8	6.1%	1	0.8%
1900-1959	5	3.5%	4	3.7%	6	4.5%	6	5.1%
2000-2059	10	6.9%	9	8.4%	4	3.0%	5	4.2%
2100-2159	13	9.0%	11	10.3%	16	12.1%	12	10.2%
2200-2259	23	16.0%	20	18.7%	15	11.4%	11	9.3%
2300-2359	27	18.8%	11	10.3%	20	15.2%	14	11.9%
0000-0059	25	17.4%	14	13.1%	17	12.9%	24	20.3%
0100-0159	13	9.0%	16	15.0%	16	12.1%	14	11.9%
0200-0259	9	6.3%	5	4.7%	7	5.3%	6	5.1%
0300-0359	3	2.1%	1	0.9%	2	1.5%	4	3.4%
0400-0459	1	0.7%	0	0.0%	1	0.8%	1	0.8%
0500-0559	0	0.0%	0	0.0%	0	0.0%	1	0.8%
0600-0659	0	0.0%	0	0.0%	0	0.0%	0	0.0%
Total	144		107		132		118	

The graph below shows all offences Day/ENTE, and weekday: Barbican (Zone 2)



NOT PROTECTIVELY MARKED
Version Date: 02/06/14

The map below shows all ENTE offences: Barbican (Zone 2)



Reproduced from Ordnance Survey Data Crown Copyright. DCC. License Number: 100022024

Author: Donald Greig, Performance and Analysis Department

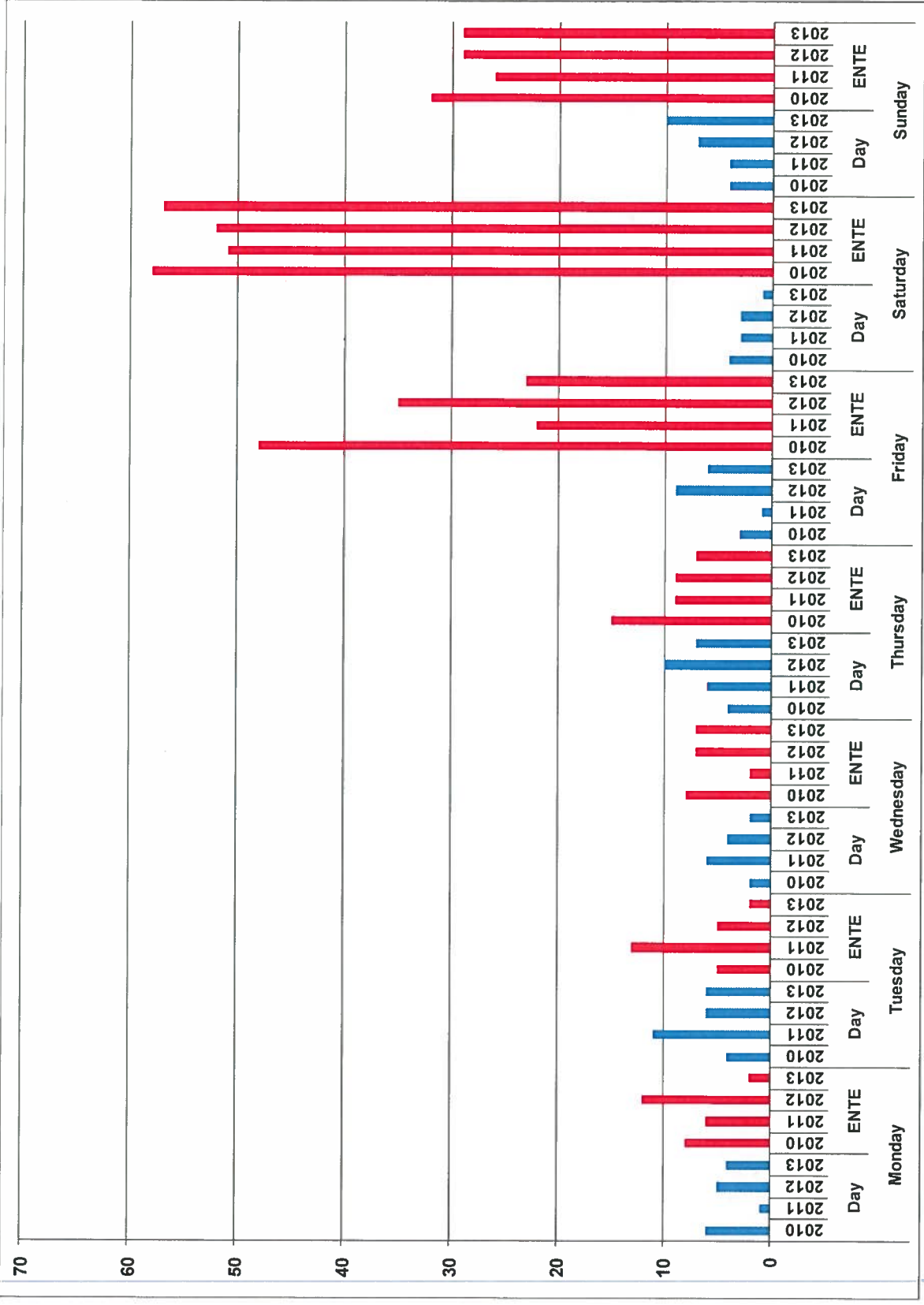
NOT PROTECTIVELY MARKED

The heat map table below shows all offences by hour and year

Barbican (Zone 2)

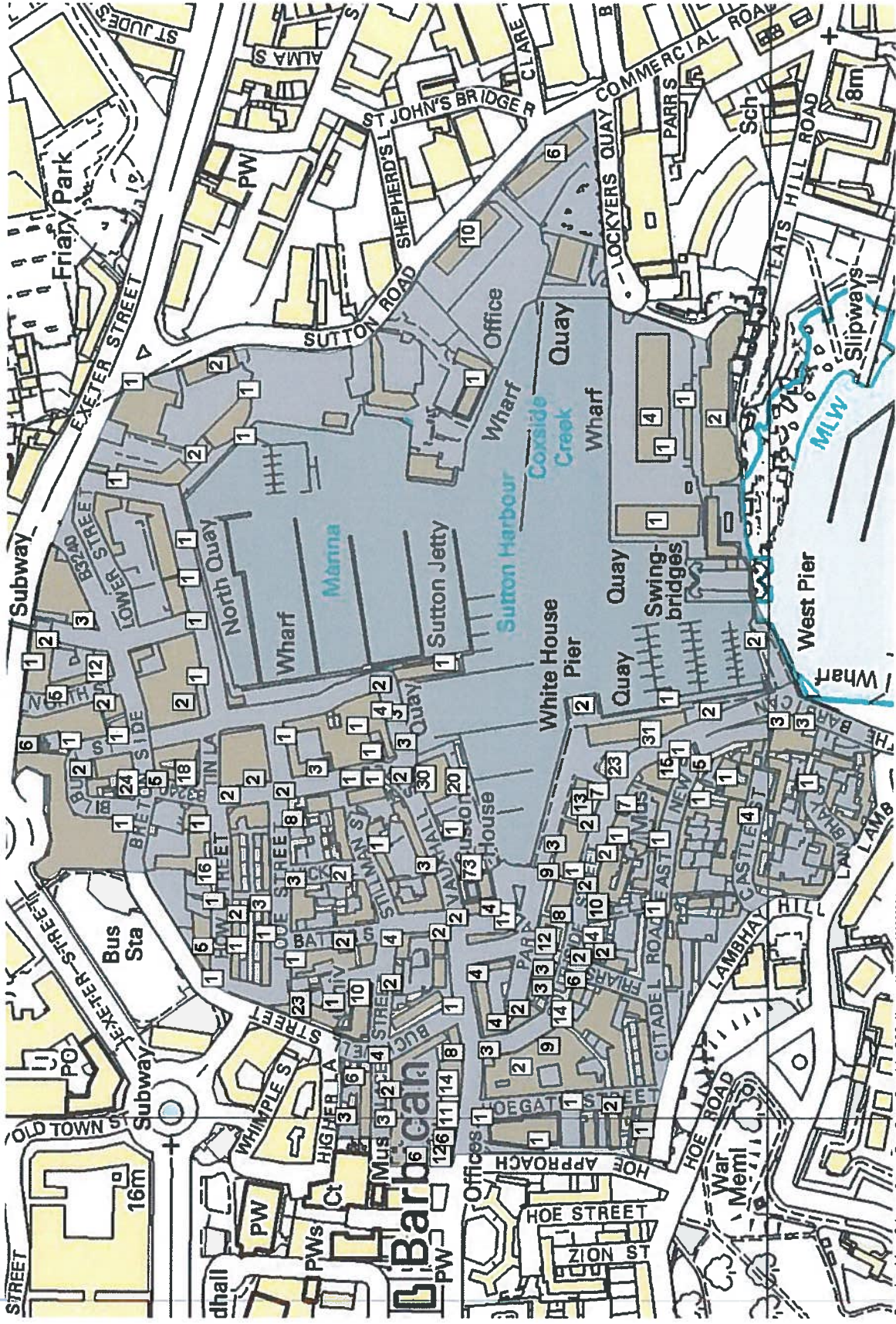
Hour	2010	% of Total	2011	% of Total	2012	% of Total	2013	% of Total
0700-0759	0	0.0%	1	0.9%	1	0.8%	0	0.0%
0800-0859	0	0.0%	2	1.9%	0	0.0%	0	0.0%
0900-0959	0	0.0%	1	0.9%	1	0.8%	3	2.5%
1000-1059	3	2.1%	5	4.7%	1	0.8%	1	0.8%
1100-1159	5	3.5%	3	2.8%	2	1.5%	2	1.7%
1200-1259	1	0.7%	5	4.7%	7	5.3%	1	0.8%
1300-1359	3	2.1%	3	2.8%	1	0.8%	5	4.2%
1400-1459	1	0.7%	1	0.9%	10	7.6%	2	1.7%
1500-1559	1	0.7%	1	0.9%	3	2.3%	4	3.4%
1600-1659	3	2.1%	4	3.7%	6	4.5%	4	3.4%
1700-1759	3	2.1%	3	2.8%	4	3.0%	8	6.8%
1800-1859	4	2.8%	3	2.8%	10	7.6%	2	1.7%
1900-1959	7	4.9%	8	7.5%	9	6.8%	6	5.1%
2000-2059	12	8.3%	12	11.2%	6	4.5%	11	9.3%
2100-2159	20	13.9%	17	15.9%	19	14.4%	18	15.3%
2200-2259	24	16.7%	20	18.7%	24	18.2%	14	11.9%
2300-2359	36	25.0%	14	13.1%	24	18.2%	17	14.4%
0000-0059	28	19.4%	18	16.8%	23	17.4%	31	26.3%
0100-0159	16	11.1%	23	21.5%	21	15.9%	16	13.6%
0200-0259	13	9.0%	6	5.6%	13	9.8%	8	6.8%
0300-0359	7	4.9%	1	0.9%	2	1.5%	6	5.1%
0400-0459	1	0.7%	0	0.0%	1	0.8%	1	0.8%
0500-0559	1	0.7%	0	0.0%	0	0.0%	1	0.8%
0600-0659	2	1.4%	0	0.0%	0	0.0%	1	0.8%
Total	191		151		188		162	

The graph below shows all offences Day/ENTE, and weekday: Barbican (Zone 1)



NOT PROTECTIVE MARKED
Version Date: 02/06/14

The map below shows all ENTE offences: Barbican (Zone 1)



Reproduced from Ordnance Survey Data Crown Copyright, DCC, Licence Number 100020204

Author: Donald Greig, Performance and Analysis Department
NOT PROTECTIVELY MARKED

The heat map table below shows all offences by hour and year

Barbican (Zone 1)

Hour	2010	% of Total	2011	% of Total	2012	% of Total	2013	% of Total
0700-0759	0	0.0%	1	0.9%	1	0.8%	0	0.0%
0800-0859	0	0.0%	2	1.9%	0	0.0%	0	0.0%
0900-0959	0	0.0%	1	0.9%	1	0.8%	4	3.4%
1000-1059	3	2.1%	5	4.7%	1	0.8%	1	0.8%
1100-1159	6	4.2%	3	2.8%	2	1.5%	2	1.7%
1200-1259	1	0.7%	5	4.7%	7	5.3%	1	0.8%
1300-1359	3	2.1%	3	2.8%	1	0.8%	6	5.1%
1400-1459	1	0.7%	1	0.9%	9	6.8%	2	1.7%
1500-1559	2	1.4%	1	0.9%	3	2.3%	4	3.4%
1600-1659	4	2.8%	4	3.7%	7	5.3%	5	4.2%
1700-1759	3	2.1%	3	2.8%	3	2.3%	9	7.6%
1800-1859	4	2.8%	3	2.8%	9	6.8%	2	1.7%
1900-1959	7	4.9%	8	7.5%	10	7.6%	6	5.1%
2000-2059	12	8.3%	13	12.1%	8	6.1%	11	9.3%
2100-2159	20	13.9%	17	15.9%	22	16.7%	15	12.7%
2200-2259	25	17.4%	23	21.5%	25	18.9%	14	11.9%
2300-2359	36	25.0%	14	13.1%	24	18.2%	17	14.4%
0000-0059	29	20.1%	19	17.8%	24	18.2%	30	25.4%
0100-0159	17	11.8%	24	22.4%	20	15.2%	17	14.4%
0200-0259	14	9.7%	9	8.4%	13	9.8%	8	6.8%
0300-0359	9	6.3%	2	1.9%	2	1.5%	6	5.1%
0400-0459	1	0.7%	0	0.0%	1	0.8%	1	0.8%
0500-0559	2	1.4%	0	0.0%	0	0.0%	1	0.8%
0600-0659	2	1.4%	0	0.0%	0	0.0%	1	0.8%
Total	201		161		193		163	